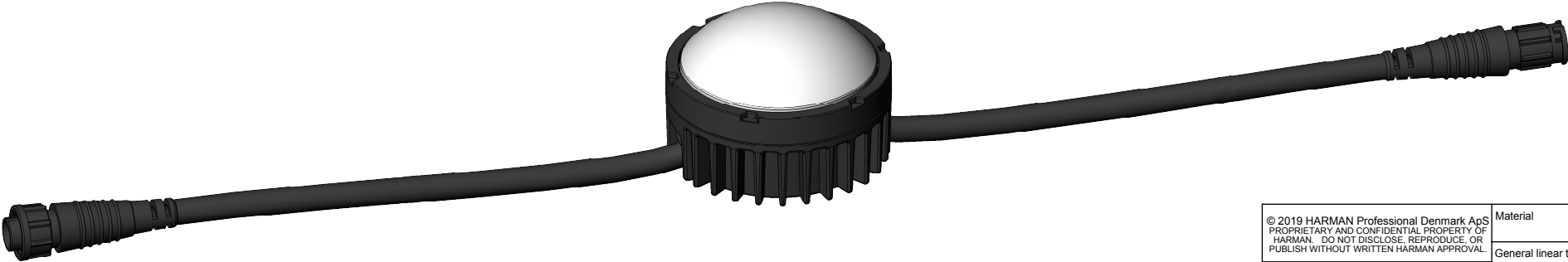
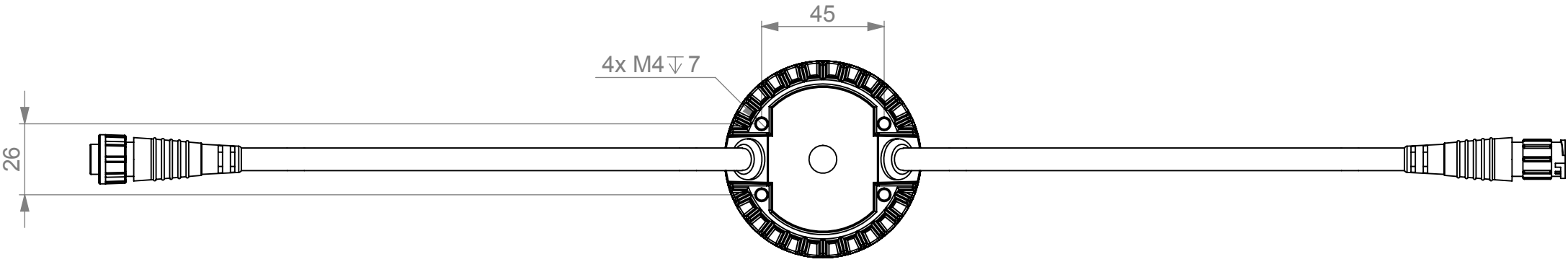
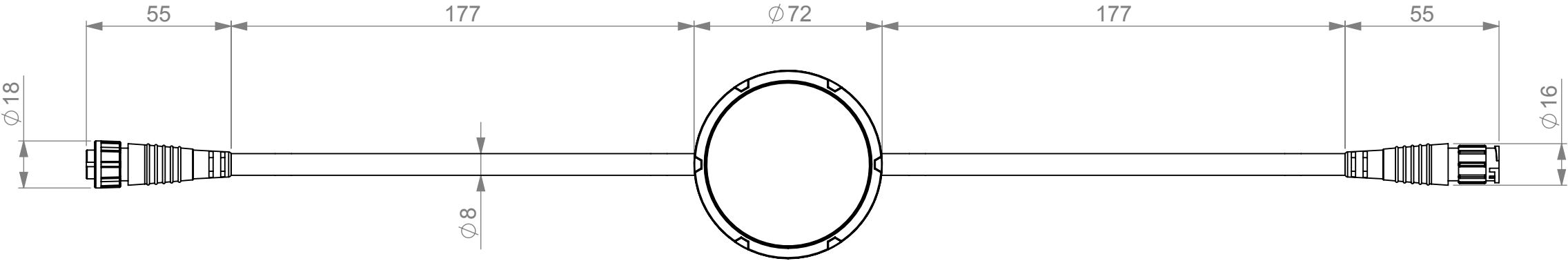
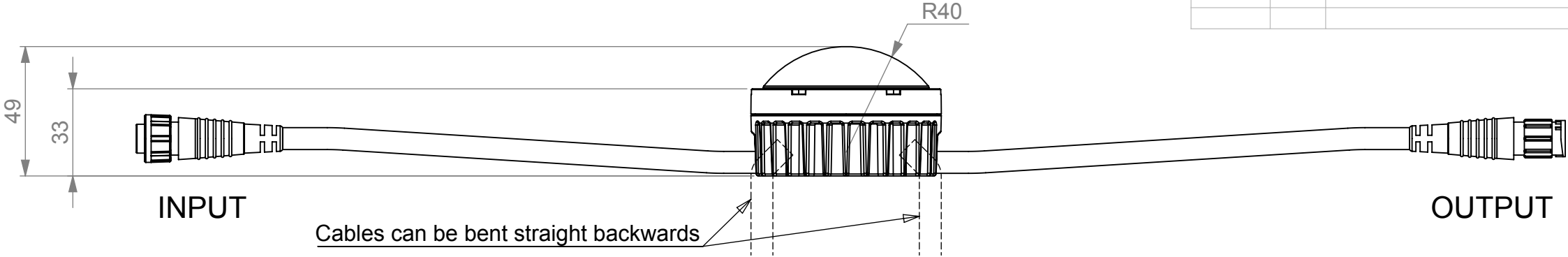


REVISION HISTORY			
DATE	REV.	DESCRIPTION	BY
10.01.2018	A	First release	rd_lto
15.04.2019	B		rd_lto



Direct fixture to fixture connection allows up to 0,5 m. center to center pitch.

<p>© 2019 HARMAN Professional Denmark ApS PROPRIETARY AND CONFIDENTIAL PROPERTY OF HARMAN. DO NOT DISCLOSE, REPRODUCE, OR PUBLISH WITHOUT WRITTEN HARMAN APPROVAL.</p> <p><b>ROHS</b> RESTRICTION OF HAZARDOUS SUBSTANCES ALL MATERIALS USED IN THIS PART MUST BE ROHS COMPLIANT. SUPPLIER SHALL PROVIDE A CERTIFICATE OF ROHS COMPLIANCE WITH THE FIRST ARTICLE.</p>	Material	FIRST ANGLE PROJECTION			<div>Martin® HARMAN</div>				HARMAN Professional Denmark ApS Oluf Palmes Allé 44 DK 8200 Aarhus N	
	General linear tolerance									
	General angular tolerance	Surface treatment	TITLE VDO DOTRON, DOME DIFFUSER							
	General geometrical tolerance	Color Black	NO. REV							
DIMENSIONS SHOWN ARE FOR REFERENCE AND INSPECTION ONLY. REFER TO CAD MODEL PROVIDED WITH THIS DRAWING FOR OVERALL DEFINITION OF PART GEOMETRY.		Project number	SIZE A3	SCALE 1:2	UNIT mm	DO NOT SCALE DRAWING	SHEET 1	OF 1		